

Advanced Data Acquisition

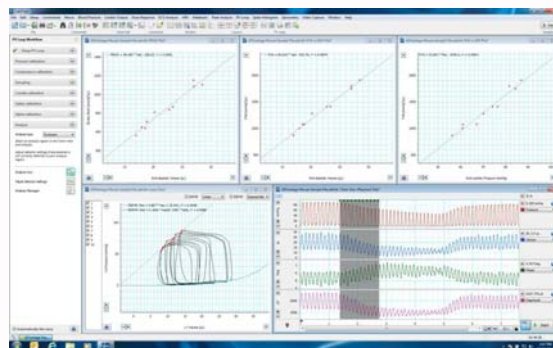
For Cardiovascular Hemodynamic Assessment

Brandon Bucher
Research Product Manager and Support Manager
Colorado Springs, CO



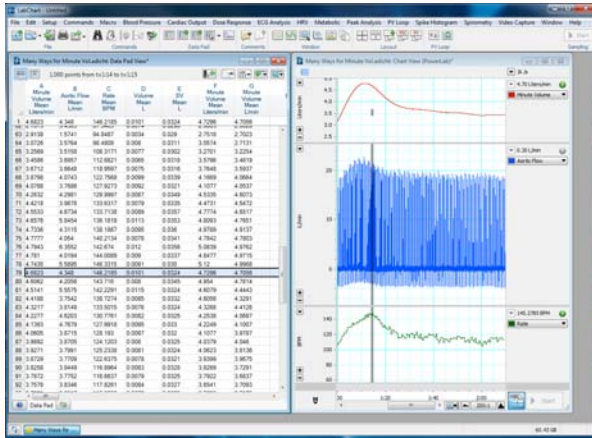
Data Analysis and Reporting

- /// Pressure
 - Blood Pressure Module
- /// Pressure-Volume
 - PV Loop Module
- /// Blood Flow
 - Using Channel Calculations and Data Pad for Blood Flow
 - Peak Analysis Module
- /// Analysis Manager



Data Pad

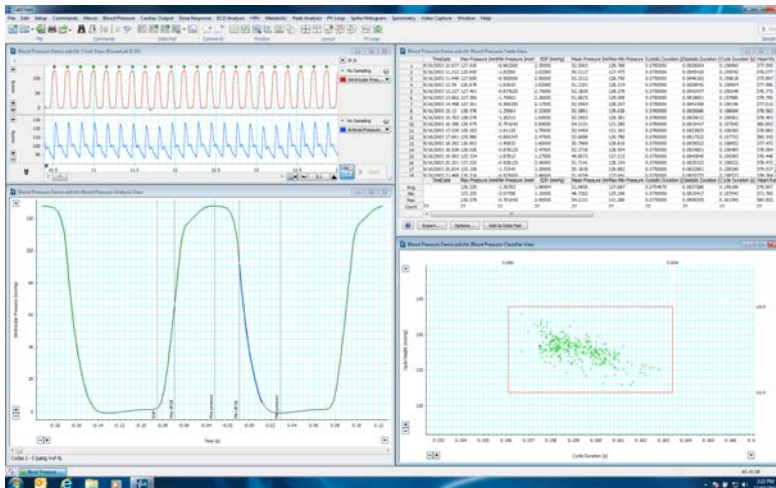
- Custom Reporting
- Most Flexible Reporting Tool
- Transfers Visual Channel Data to a Reportable Spreadsheet



ADINSTRUMENTS

Pressure

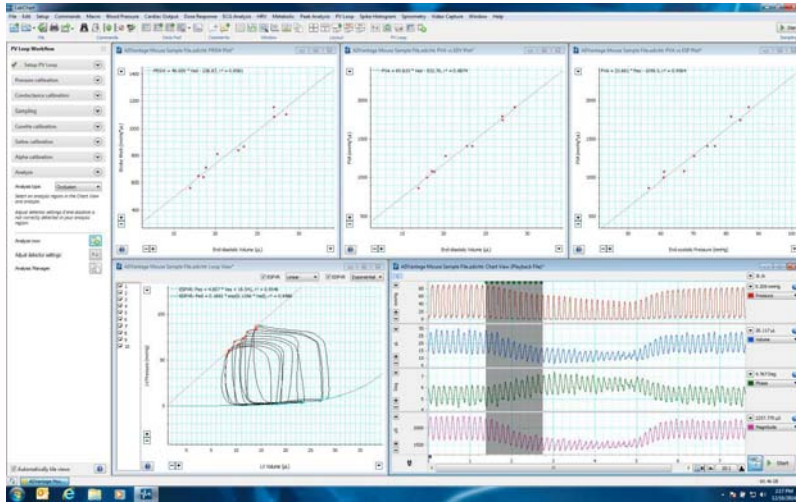
- Automated Analysis for Blood Pressure



ADINSTRUMENTS

Pressure-Volume

Automated Analysis for Ventricular Pressure Volume

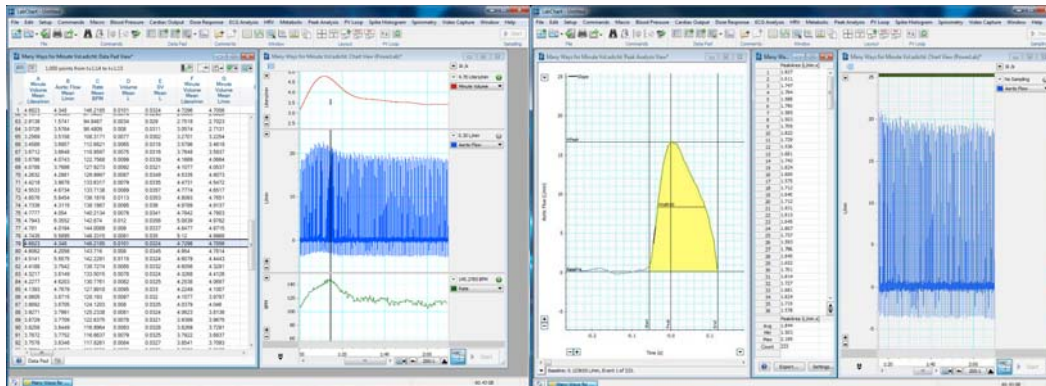


ADINSTRUMENTS

Blood Flow – Two Options

Data Pad Reporting

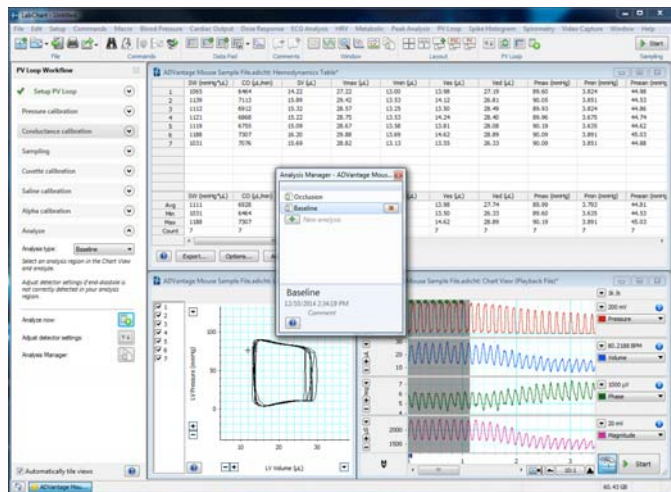
Peak Analysis



ADINSTRUMENTS

Analysis Manager

Save, Revise and Confirm your Analysis



ADINSTRUMENTS